



24TH APRIL 2026  
NEWSLETTER



UNITY



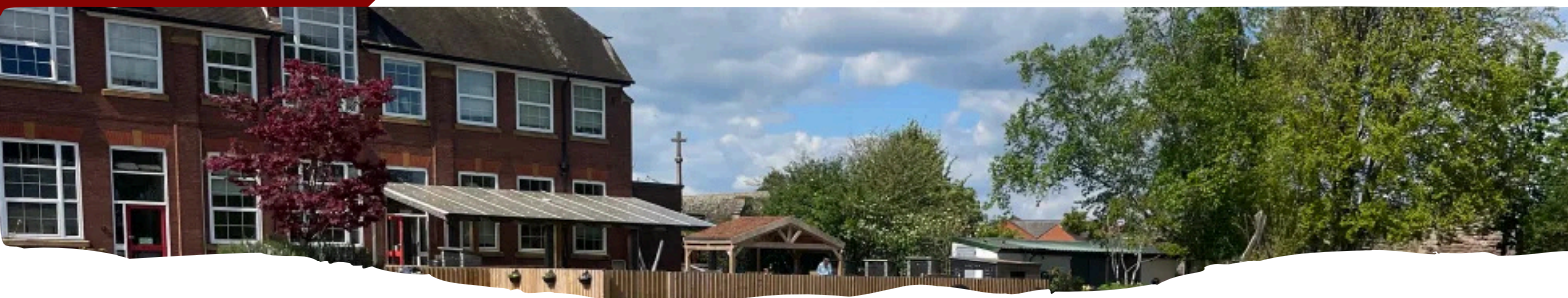
LOVE




PERSEVERANCE

Matthew 5:14-16

SHINE BRIGHT YOUR LIGHT



## Exploring Our Vision

 Our vision is that we enable every child to 'shine bright their light.' This is a key message from Matthew 5:14-16. It combines the message of, 'You are the light of the world' and 'let your light shine.' We are clear about our mission -lighting up lives so that they may share the light.

Jesus calls us to be like a candle held in God's hands, bringing light to His world. Love represents the flame, unity is represented by the wick and perseverance the wax which together provide the light to follow our vision.

### PRAYER

Dear God  
May this summer be filled with warmth, joy, and gentle moments of love. Let our hearts grow kinder, our days brighter, and our lives richer in care for one another.  
Amen.

### KEY EVENTS

- Monday 27<sup>th</sup> April
- Year 3 begin 2 weeks of intensive swimming
- Monday 11<sup>th</sup> - 15<sup>th</sup> May
- Y6 SATs week
- Tuesday 12<sup>th</sup> May
- Y2 Farm Trip
- Wednesday 13<sup>th</sup> May
- Y3 Farm trip

### MESSAGES

We kindly ask that parents do not bring in sweets or food items to share for birthdays. While we always celebrate by singing happy birthday and making each child feel special, we have a range of allergies and religious dietary requirements within the school. A reminder that morning snack is permitted but this should only be an item of fruit. We do have fruit on offer for all pupils throughout the week. Other snacks may be eaten as a treat with lunch.

We also ask when dropping off your child for breakfast club, or collecting from afterschool club, please do not ring until you are waiting at the gate. Due to staff-to-child ratios and supervision requirements, staff are unable to wait outside for parents. We really appreciate your understanding and support in helping us keep all children safe and included. Thank you.

## THIS WEEK



What a perfect day to practise our throwing and catching skills. Class 3 are loving the chance this term to be outside and practise skills to be ready to play rounders. We are respecting one another and using clear communication skills in our sessions #lovetc #stcpe

YR	Y1	Y2	Y3	Y4	Y5	Y6
94.6%	98.9%	89.7%	100%	95.3%	97.8%	98.1%

ATTENDANCE: STC 96.4% NATIONAL 94.6%



ST THOMAS CANTILUPE  
CHURCH OF ENGLAND PRIMARY SCHOOL



Coningsby Street, Hereford HR1 2DY



admin@st-thomascantilupe.hereford.sch.uk



01432 268400



@st-thomascantilupe.bsky.social



www.st-thomascantilupe.org



# STC Curriculum Focus



**Training days:**  
Monday 1st and Tuesday 2nd September 2025  
Monday 5th January 2026 and Friday 17th July 2026  
May Day: Monday 4th May 2026



## Nursery & Year R

Reception have been working so hard in maths this week. They have been looking at the pattern of numbers and making numbers 11-20 using Numicon. We like looking for patterns. Great work! [#eyfsSTC](#) [#perseveranceSTC](#)



## Year 1 & Year 2

Class 2 were introduced to flora and fauna artwork. Then created their own mini versions inspired by the school environment. We have enjoyed beautiful, creative afternoons in the sunshine and made the most of our playtimes on the field! [@accessart.bsky.social](#) [#artstc](#) [#ks1stc](#) [#lovestc](#)



## Year 3 & Year 4

Class 4 loved having the opportunity to perform their learning in drama this wee. We were thinking about characters from the Roman Empire and linking these with our History topic work from this term. [#unitystc](#) [#dramastc](#) [#HerefordCourtyard](#)



## Year 5 & Year 6

Class 5 are starting to produce the story map of our new Talk for Writing story, 'The Highwayman'. It is based on the famous narrative poem by Alfred Noyes. [@piecorbett.bsky.social](#) [@youngwriterspen.bsky.social](#) [@literacy-trust.bsky.social](#) In class 6 we had a practise for our SATs tests. We really started to focus on the key words to help us solve the problems in the reasoning papers.

### Term Dates:

#### Autumn

Starts  
3.9.25  
Half Term  
27.10.25 - 31.10.25  
Ends  
19.12.25

#### Spring

Starts  
06.01.26  
Half Term  
16.02.26-20.02.26  
Ends  
27.03.26

#### Summer

Starts  
13.04.26  
Half Term  
25.05.26-29.05.26  
Ends  
16.07.26



**ST THOMAS CANTILUPE**  
CHURCH OF ENGLAND PRIMARY SCHOOL

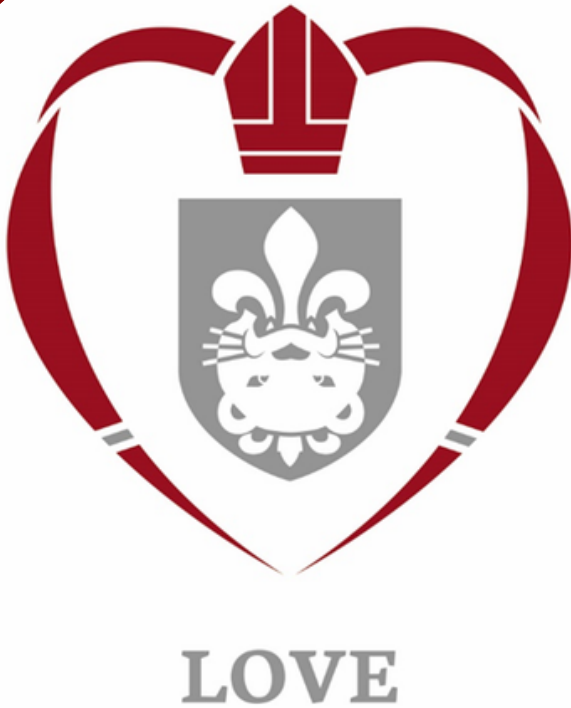
Coningsby Street, Hereford HR1 2DY

admin@st-thomascantilupe.hereford.sch.uk

01432 268400

@st-thomascantilupe.bsky.social

www.st-thomascantilupe.org



**Class 6 shared a love for learning as they began their new Geography topic, exploring the landmarks and landscapes of Hereford. Guided by clues and directions, they discovered so many little details we'd never noticed before. #loveHereford**

**'God is love. Whoever lives in love lives in God, and God in them.' John 4:16**

**Jesus has the brightest love of all: God is love. Jesus is God with us. He is God in human form. He is the very definition of love. He has the brightest love ever!**

**Love brings light: Love is the flame of the candle, making the world brighter. The more we love God and love one another, the brighter we shine.**

**Love is our purpose: To shine bright with light is the purpose of a candle. To shine bright with love is our purpose as people - as Jesus shows us.**



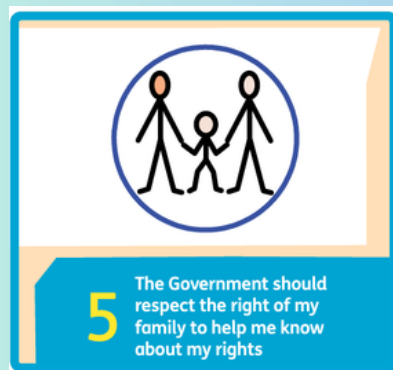
# STC Rights Respecting School



The United Nations Convention on the Rights of the Child is an important agreement by countries who have promised to protect children's rights.

It explains who children are, all their rights, and the responsibilities of governments.

All the rights are connected. They are all equally important and they cannot be taken away from children



**5**  **The Government should respect the right of my family to help me know about my rights**

  Governments should respect the rights and responsibilities of parents to guide their children.

  As I grow, my family should direct and guide me so that I learn to use my rights properly.

The ABCDE of rights:

- A: Rights are for ALL children (Universal)
- B: Rights are there at BIRTH (inherent)
- C: Rights CANNOT be taken away (inalienable)
- D: Rights DO NOT have to be earned (unconditional)
- E: All rights are EQUALLY important (indivisible)


If you're interested in getting involved, please contact Miss East or Miss Scott, our RRS lead teachers.



**ST THOMAS CANTILUPE**  
CHURCH OF ENGLAND PRIMARY SCHOOL

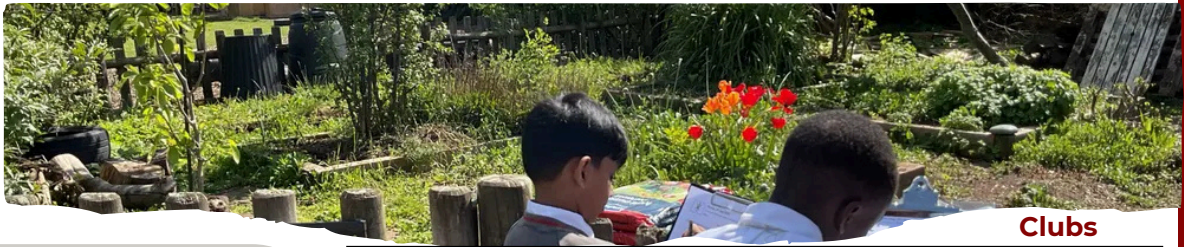
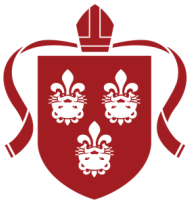
 Coningsby Street, Hereford HR1 2DY

 [admin@st-thomascantilupe.hereford.sch.uk](mailto:admin@st-thomascantilupe.hereford.sch.uk)

 01432 268400

 @st-thomascantilupe.bsky.social

 [www.st-thomascantilupe.org](http://www.st-thomascantilupe.org)



### Clubs

#### PE days

Year R

Wednesdays

Year 1

Tuesday & Wednesday

Year 2

Tuesday & Wednesday

Year 3

Monday & Tuesday

Year 4

Monday & Tuesday

Year 5 & 6

Thursday & Friday

Monday	Tuesday	Wednesday	Thursday
Y1/2 Outdoor Games	Y3/4 Tag Rugby		Y3-Y4 Doodle Club
Y5/6 Craft Club	Y3-6 Drama		Balance bikes YR

Clubs start Monday 13th April for 6 weeks. Any uncollected children will be taken to ASC and there will be a charge for this.

## GENERAL NOTICES

- **Purchase uniform items** (jumper, tie, bookbag) from us via [www.eduspot.co.uk](http://www.eduspot.co.uk)
- **Illness/absence** Parents must call the school office before 10am each day of absence to give an update
- **Lunches** book by Friday the week before via [www.eduspot.co.uk](http://www.eduspot.co.uk) cancel before 8.30 am on the day by calling AIP 01568 610432
- **Clubs Y1-Y6 finish at 4pm.** Uncollected children will be taken to ASC and a charge of £5.00 will be payable.
- **Breakfast and after school care (ASC) Call 07547093255** Book in advance via [www.eduspot.co.uk](http://www.eduspot.co.uk) **3.15-4.15pm (Mon-Fri), 4.15-5.15pm (Monday-Thursday only)**
- **ASC for Nursery pupils** is only available **3.15-4.15pm**
- **Drop offs and pick-ups at nursery** If you arrive after 8.45 am or pick up before 3.15 pm ring the nursery team on **07547093255**
- **TAX-FREE CHILDCARE** Find out more about your eligibility here: <https://www.gov.uk/tax-free-childcare>
- **FREE SCHOOL MEALS – DO YOU QUALIFY?** If you qualify for Free School Meals, financial support is available from Herefordshire Council for school holidays which should be used to purchase local supermarket vouchers; as well as having school lunches free each school day. If your circumstances have changed and you think you may be eligible for Free School Meals go to: **Free school meals – Herefordshire Council** to apply or talk to our office staff
- Foodshare every Tuesday and Wednesday provided we have stock. Please bring your own bags. All food is free.



**ST THOMAS CANTILUPE**  
CHURCH OF ENGLAND PRIMARY SCHOOL



Coningsby Street, Hereford HR1 2DY



admin@st-thomascantilupe.hereford.sch.uk



01432 268400



@st-thomascantilupe.bsky.social



www.st-thomascantilupe.org

Should I keep my

# child off school?

## Yes

Until...

Chickenpox	at least 5 days from the onset of the rash and until all blisters have crusted over
Diarrhoea and Vomiting	48 hours after their last episode
Cold and Flu-like illness (including COVID-19)	they no longer have a high temperature and feel well enough to attend. Follow the national guidance if they've tested positive for COVID-19.
Impetigo	their sores have crusted and healed, or 48 hours after they started antibiotics
Measles	4 days after the rash first appeared
Mumps	5 days after the swelling started
Scabies	they've had their first treatment
Scarlet Fever	24 hours after they started taking antibiotics
Whooping Cough	48 hours after they started taking antibiotics

## No

but make sure you let their school or nursery know about...

Hand, foot and mouth	Glandular fever
----------------------	-----------------



SCAN ME

Advice and guidance

To find out more, search for



## REMINDERS FOR PUPILS

### School uniform

- School jumper (V-neck dark grey with logo and collar piping)
- School tie (plain red- elasticated or standard)
- White buttoned shirt (short or long sleeved)
- Black trousers, skirt, or pinafore dress
- Black socks or tights
- Smart black shoes

### Be proud and smart

- Hair decoration should be kept to a minimum with simple hair bands only, in natural hair colours.
- No jewellery should be worn apart from **plain** stud earrings. This includes no Smart watches. A simple standard analogue watch may be worn to help pupils with learning the time. Pupils are not allowed phones in the school, if pupils need access to a phone after school, they must be given into the office on arrival for safekeeping.
- No nail varnish should be worn.
- Longer hair should be tied back.

### Second-hand uniform

- We encourage families to donate good quality school uniform for others to the school office. By donating uniform you are helping keep good clothing out of landfill and recycling uniform to children who need it.
- Please ask us if you need support with obtaining school uniform
- Herefordshire Free School Uniform has a [website listing current stock](#) available for collection.

## Attendance

At St Thomas Cantilupe CofE Primary, we are committed to ensuring that your child receives the best possible education and support. We strongly believe that regular school attendance is crucial for the educational progress and overall wellbeing of our pupils.

### Expectations



As parents/carers, you have a legal duty to ensure that your child attends school regularly.

The Department for Education (DfE) provides clear guidance for parents regarding attendance expectations. Unauthorised absences can negatively impact your child's education.

### Term-Time Holidays



We understand that family time is important, but according to Department for Education (DfE) guidelines, term-time holidays are not permitted as they impact your child's education.

Absences due to holidays disrupt learning and result in missed opportunities in the classroom.

### Potential Penalty Notices

If the national threshold of 10 unauthorised absences in a 10 week period is met, the school has a duty to notify Herefordshire Council Enforcement Team and you may face a penalty notice and/or other legal action.

Please be aware that unauthorised absences may lead to local authority penalty notices. A penalty notice is issued to each parent for each child. A fixed-penalty notice of £80 may be issued if paid within 21 days, increasing to £160 if paid within 28 days. If you get a second fine in 3 years it will be £160. If you do not pay the fine in 28 days you may be taken to court for keeping your child out of school.

If your child is off school 3 or more times within the 3 years you will not be fined but may be taken to court.

This is in line with DfE guidance and is intended to deter unnecessary absences. Herefordshire Council policy and guidance can be found here: [School attendance and absences information for parents and carers – Herefordshire Council](#)

## Term Length 2025-26

### Autumn Term 1

3 September 2025 to 24 October 2025 (38 days)

School holiday: 27 October 2025 to 31 October 2025

### Autumn Term 2

3 November 2025 to 19 December 2025 (35 days)

School holiday: 22 December 2025 to 5 January 2026

### Spring Term 3

6 January 2026 to 13 February 2026 (29 days)

School holiday: 16 February 2026 to 20 February 2026

### Spring Term 4

23 February 2026 to 27 March 2026 (25 days)

School holiday: 30 March 2026 to 10 April 2026

### Summer Term 5

13 April 2026 to 22 May 2026 (29 days) Bank holiday 4 May

School holiday: 25 May 2026 to 29 May 2026

### Summer Term 6

1 June 2026 to 16 July 2026 (34 days)

## Messages

We are delighted to be able to share with you the Statutory Inspection of Anglican and Methodist Schools (SIAMS) Report. The report highlights how well the STC enables all pupils and adults to flourish, living up to its foundation as a Church school. You can read the full report at: [SIAMS Report Library: National Society for Education](#). Our January 2026 Ofsted report is available to read via the Ofsted website and also our school website.



**ST THOMAS CANTILUPE**  
CHURCH OF ENGLAND PRIMARY SCHOOL



Coningsby Street, Hereford HR1 2DY



admin@st-thomascantilupe.hereford.sch.uk



01432 268400



@st-thomascantilupe.bsky.social



www.st-thomascantilupe.org

# MAY HALF TERM INTENSIVE SWIMMING LESSONS

Get **50% OFF** your booking – only £17.50 total for 4 lessons!

Limited spots – don't miss out!  
Call us on **01432 842075**, or pop in to your local pool to secure your child's place.

\*Terms & conditions apply. Offer ends 17th May 2026.



halo

Term dates 2026/27

## AUTUMN TERM 2026:

**Term Starts:** Thursday 3rd September 2026  
**Half Term:** Monday 26th October – Friday 30th October 2026  
**Term Ends:** Friday 18th December 2026

## SPRING TERM 2027:

**Term Starts:** Wednesday 6th January 2027  
**Half Term:** Monday 15th to February to 19th February 2027  
**Term Ends:** Thursday 25th March 2027

## SUMMER TERM 2027:

**Term Starts:** Monday 12th April 2027  
**Half Term:** Monday 31st May to Friday 4th June 2027  
**Term Ends:** Tuesday 20th July 2027

## Other dates:

Good Friday 26th March 2027  
May Day 3rd May 2027

## Staff Training Days:

Tuesday 1st September 2026  
Wednesday 2nd September 2026  
Tuesday 5th January 2027  
Wednesday 21st July 2027  
2 twilights

## MESSAGES



ADHD UK

### ADHD and ASD assessment – Right To Choose Right To Choose

Information on alternative referral options for ADHD & ASD assessment

If you are based in England under the NHS you now have a legal right to choose your mental healthcare provider and your choice of mental healthcare team, this includes for referrals relating to Autism and ADHD assessment. This service is offered through the NHS and is free.



## SEND Newsletter

Herefordshire and Worcestershire SEND Partnership  
Herefordshire SEND Partnership  
Herefordshire Council

Find information from the Herefordshire SEND team via this link.

You can keep up to date with our day to day learning and enrichment activities by following the school's BlueSky account. We post lots of photographs, video and information about what's happening in school on the platform. To find out more about how to create your own account click the [link here](#) or come in and chat to Mrs Higgins. We use the handle @st-thomascantilupe.bsky.social search for us to follow us.

## How do I join Bluesky?



**ST THOMAS CANTILUPE**  
CHURCH OF ENGLAND PRIMARY SCHOOL



Coningsby Street, Hereford HR1 2DY



admin@st-thomascantilupe.hereford.sch.uk



01432 268400



@st-thomascantilupe.bsky.social



www.st-thomascantilupe.org